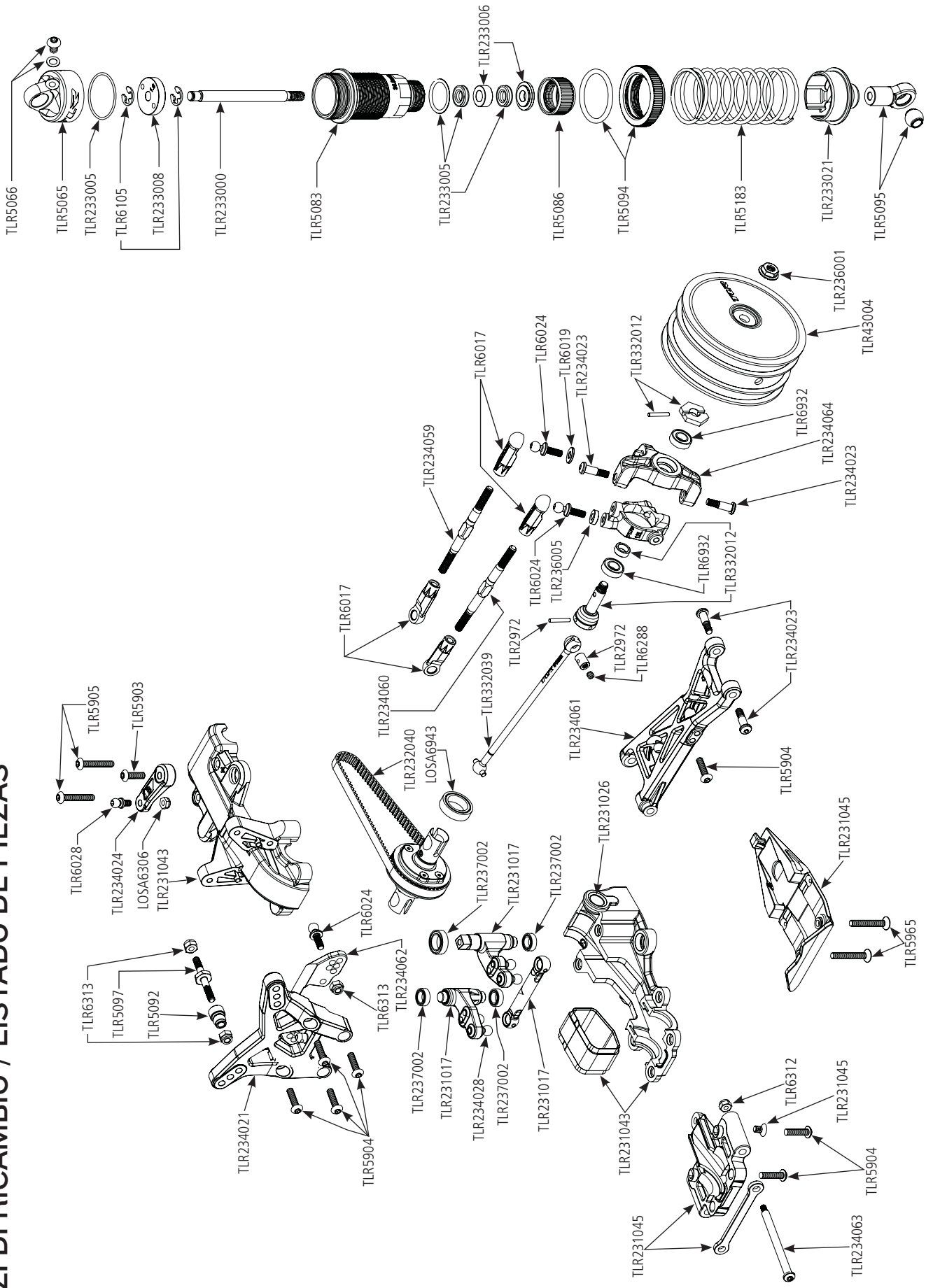
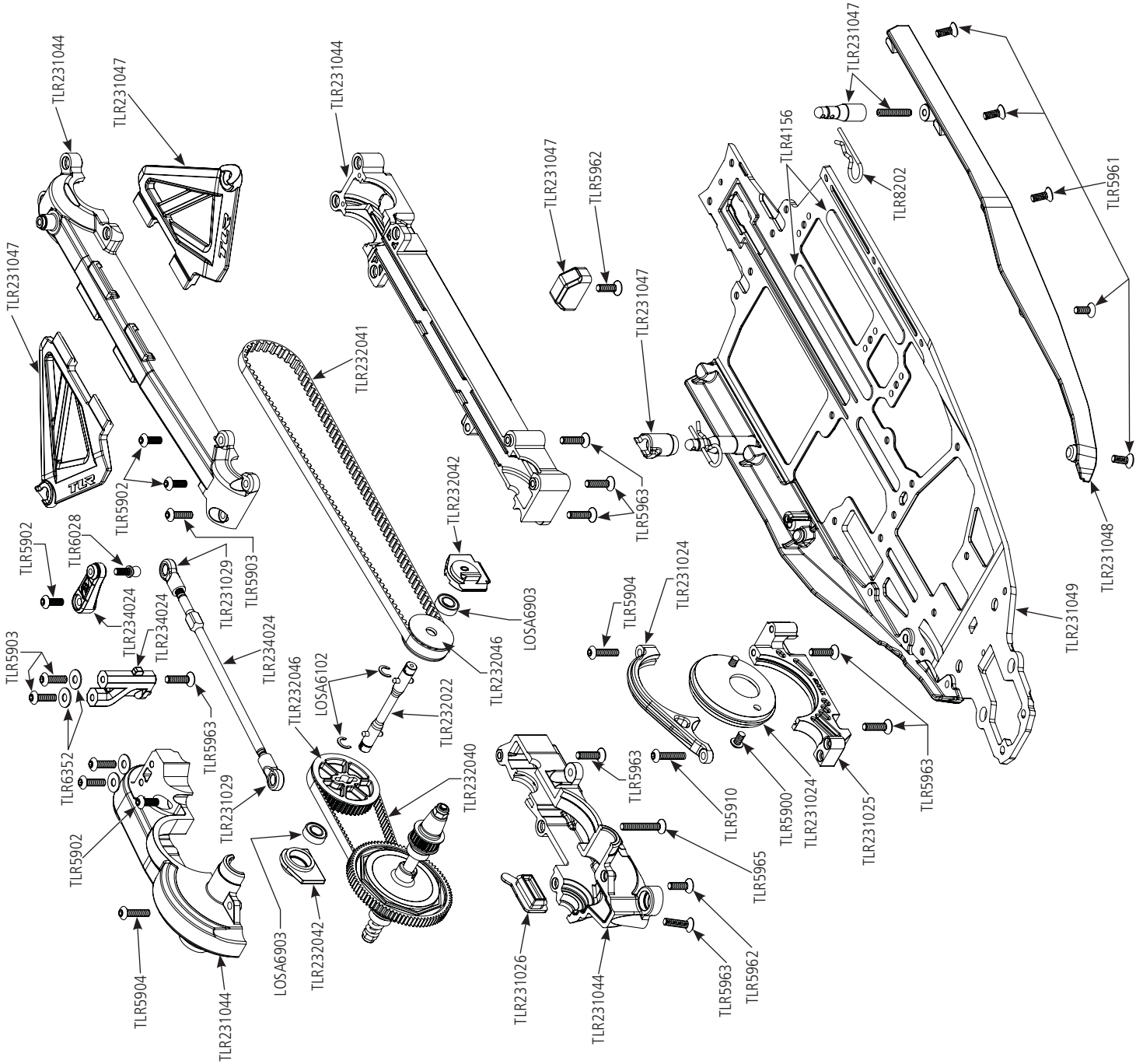
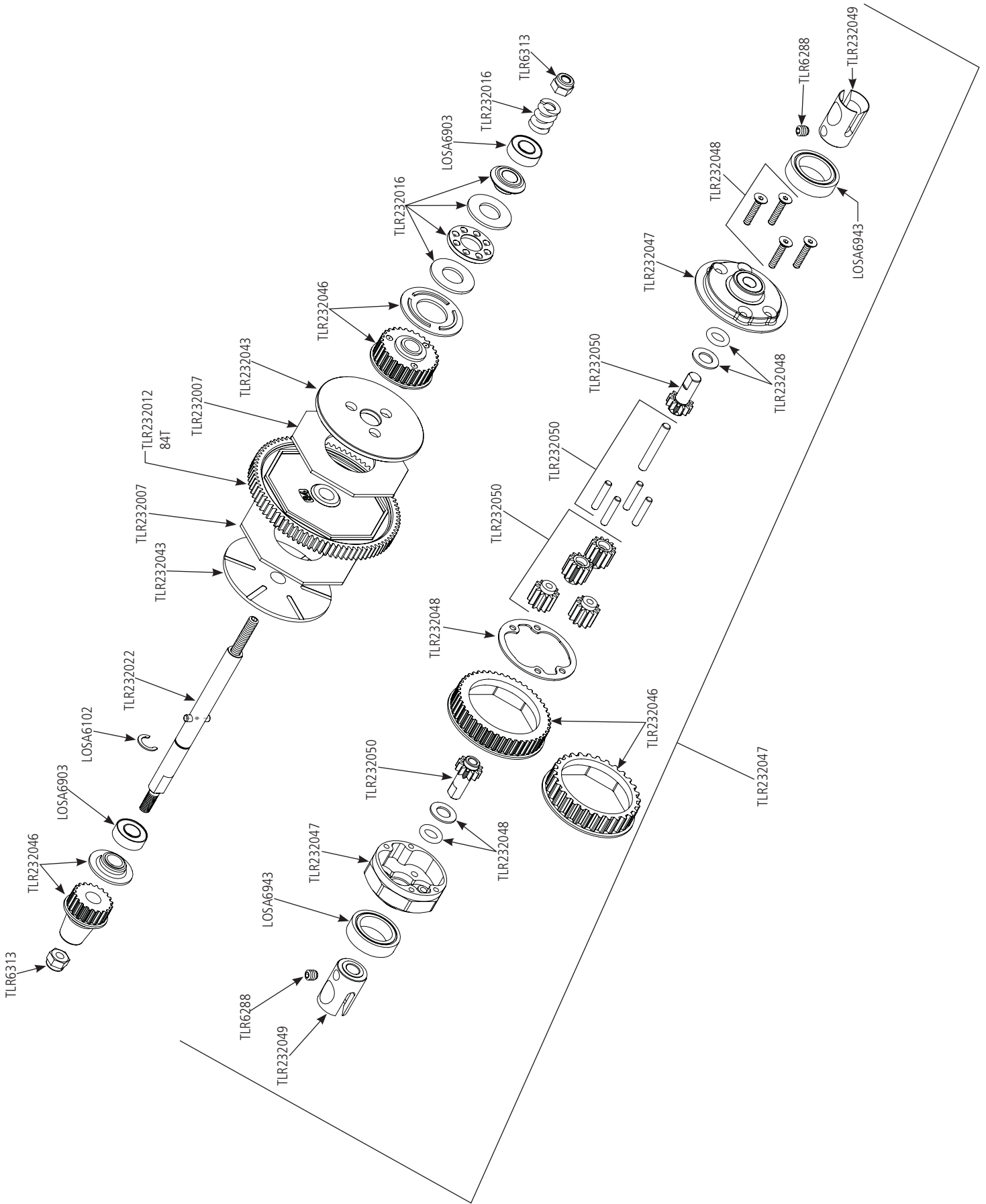
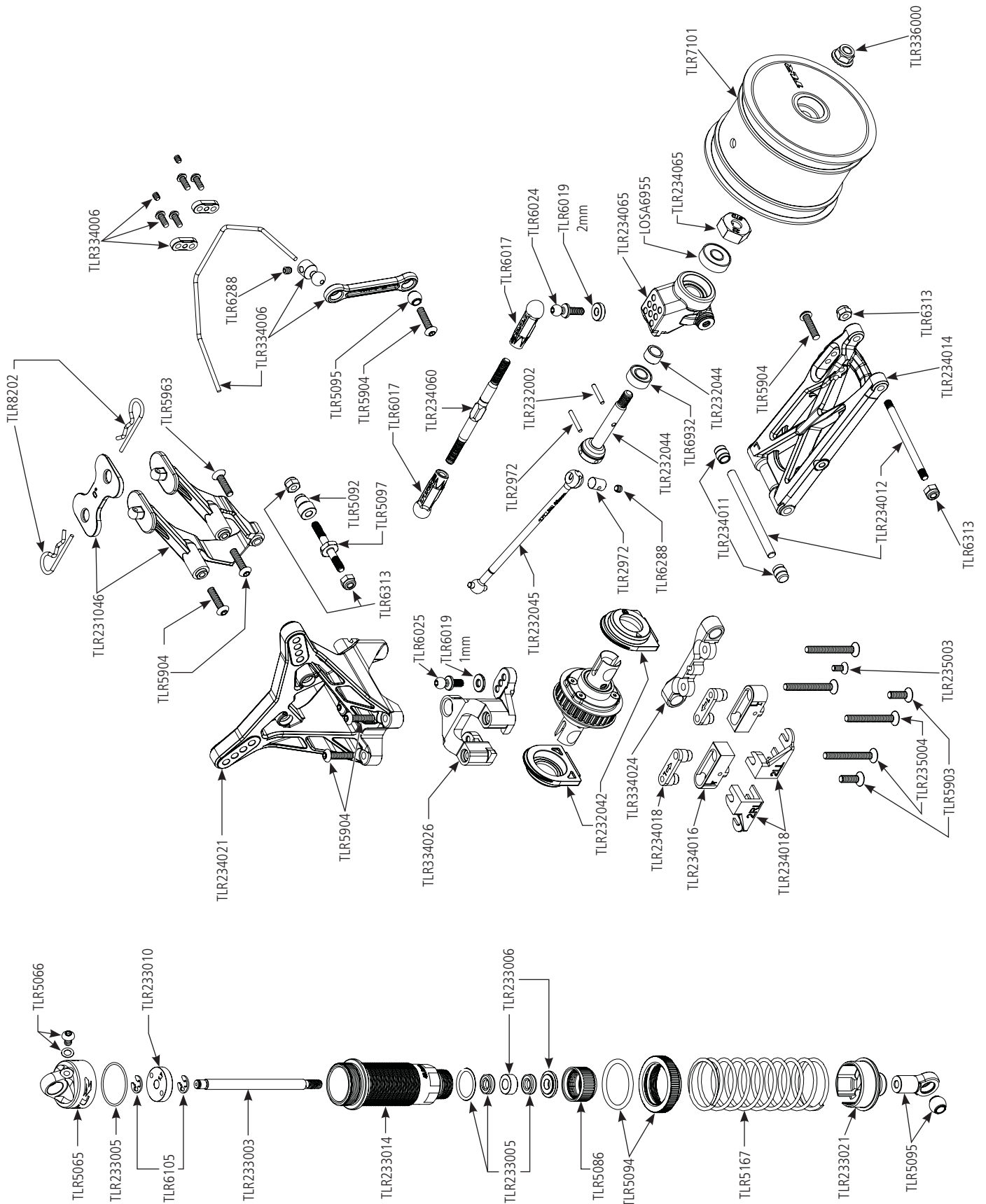


**REPLACEMENT PARTS / ERSATZTEILE / PIÈCES DE RECHANGE /  
PEZZI DI RICAMBIO / LISTADO DE PIEZAS**









Part #	English	Deutsch	Français	Italiano	Español
LOSA4002	Antenna Kit	Losi Antennen Kit	Tube d'antenne	Kit antenna	Kit de antena
LOSA6102	C-Clips, Large	C-Clips, groß	C-Clips, Larges	Clips a C, grande	Clips de C, grande
LOSA6306	4-40 Aluminum Mini-Nuts (10)	Losi 4-40 Aluminium Mini-Muttern (10)	Mini écrous 4-40 aluminium (10)	4-40 Mini dadi alluminio (10)	Mini-tuercas aluminio 4-40 (10)
LOSA6903	Sealed BB, 3/16x3/8 (2)	Losi 3/16x3/8 Kugellager gekapselt (2)	Roulements étanches 3/16x3/8 (2)	3/16x3/8 Cuscinetti stagni (2)	Rodamiento sellado 3/16x3/8 (2)
LOSA6943	10 x 15mm Sealed Ball Bearing (2): 22	Losi 10 X 15mm Kugellager gekapselt (2): 22	22 - Roulements étanches 10 x 15mm (2)	10 x 15mm Cuscinetti stagni (2): 22	Rodamiento sellado 10x15mm (2): 22
LOSA6955	5 x 13mm HD Clutch Bearings (2): 8B/8T	Losi 5 x 13mm HD Kupplungslager (2): 8B/8T	8B/8T - Roulements de cloche renforcés 5 x 13mm	5 x 13mm HD Cuscinetti frizione (2): 8B/8T	Rodamientos campana HD 5x13mm (2): 8B/8T
TLR1066	Ballstud/Hub Spacer Set: 22	Gelenkbolzenanker, vorne und hinten, 22	22 - Renfort de fusées Av. et Ar.	Staffe del cardine anteriori e posteriori, 22	Placa soporte pasadores delanteros y traseros, 22
TLR230002	6.5" Medium Downforce Wing, Clear, Precut (2)	TLR 6.5 Medium Downforce Flüge vorgeschritten (2)	Aileron appui moyen, prédécoupé (2)	6.5" alettone deportanza media, pretagliato (2)	Alerón precortado 6.5" carga aerodinámica media (2)
TLR231017	Steering Bellcrank Set: 22-4	Lenkhebel Set: 22-4	22-4 - Renvois de direction	Set quadrette sterzo: 22-4	Pivotes de dirección: 22-4
TLR231024	Motor Cam & Strap, Aluminum: 22-4	Motorhalter Alu: 22-4	22-4 - Came et pontet de fixation moteur en aluminium	Camme motore & laccio, alluminio: 22-4	Leva y cinta de motor, Aluminio: 22-4
TLR231025	Motor Mount, Aluminum: 22-4	Motorträger: 22-4	22-4 - Support moteur en aluminium	Supporto motore, alluminio: 22-4	Soporte motor, Aluminio: 22-4
TLR231026	Access Plugs: 22-4	Zugangsstecker: 22-4	22-4 - Capuchons	Connettori accesso: 22-4	Tapones de acceso: 22-4
TLR231029	Steering Link and Angled Ball Cups: 22/2.0/T/SCT	TLR: TLR Lenkgestänge und Kugelpfannen gewinkelt: 22SCT 2.0	22/2.0/T/SCT - Bielle de direction avec chapes	Collegamento sterzo e attacchi a sfera: 22/2.0/T/SCT	Varilla de dirección con abrazaderas: 22/2.0/T/SCT
TLR231043	Front Belt Cover & Sub Frame: 22-4 2.0	Riemenabdeckung vorne: 22-4 2.0	22-4 2.0 - Carter avant de protection de courroie	Copertura cinghia anteriore & sotto telaio : 22-4 2.0	Cubierta de la correa delantera y sub-chasis: 22-4 2.0
TLR231044	Belt Cover Set, Center & Rear: 22-4 2.0	Riemenabdeckung mitte und hinten: 22-4 2.0	22-4 2.0 - Couverture de protection central et avant	Set copertura cinghia, centrale & posteriore: 22-4 2.0	Cubierta de la correa, centro y trasera: 22-4 2.0
TLR231045	Front Pivot, Brace & Bumper: 22-4 2.0	Lenkehebelhalter vorne und Stoßfänger: 22-4 2.0	22-4 2.0 - Cale de pincement, pare choc et renfort avant	Perno anteriore, supporto e paraurti: 22-4 2.0	Pivote delantero, soporte y parachoques: 22-4 2.0
TLR231046	Rear Wing Stay & Washers: 22-4 2.0	Flügelhalter hinten und Distanzstücke: 22-4 2.0	22-4 2.0 - Support d'aileron arrière avec rondelles	Appoggio alettone posteriore e rondelle: 22-4 2.0	Soporte del alerón trasero con arandelas: 22-4 2.0
TLR231047	Battery Mount Set: 22-4 2.0	Akkualter: 22-4 2.0	22-4 2.0 - Support batterie	Set supporto batteria: 22-4 2.0	Soporte de la batería: 22-4 2.0
TLR231048	Mud Guard Set: 22-4 2.0	Schmutzfänger: 22-4 2.0	22-4 2.0 - Bavettes	Set parafango: 22-4 2.0	Guardabarros: 22-4 2.0
TLR231049	Chassis: 22-4 2.0	Chassis: 22-4 2.0	22-4 2.0 - Châssis	Telaio: 22-4 2.0	Chasis: 22-4 2.0
TLR232002	Solid Drive Pin Set (8): 22/T/SCT	TLR Antriebspin Set (8): 22/T/SCT	22/T/SCT - Jeu de goupilles d'entraînement pleines (8)	Set perni trasmissione (8): 22/T/SCT	Pasador sólido rueda cardan (8): 22/T/SCT
TLR232007	HDS Slipper Pad (2)	TLR HDS Slipper Pad (2)	Garniture de slipper HDS (2)	HDS Pattino antisaltellamento (2)	Almohadillas embrague HDS (2)
TLR232012	HDS Spur Gear, 84T 48P, Kevlar: All 22	TLR HDS Zahnrad 84T 48P Kevlar: alle 22	22 - Couronne Kevlar HDS, 84T 48P	Corona HDS, 84T 48P, Kevlar: All 22	Corona HDS 84T 48P kevlar: Todos 22
TLR232016	Thrust Bearing Set, Slipper: 22-4	Drucklager Kupplung: 22-4	22-4 - Butée à bille et accessoires de slipper	Set cuscinetto reggisplinta, slipper: 22-4	Cojinete de empuje, slipper: 22-4
TLR232022	Slipper & Jackshaft Assembly: 22-4	Rutschkupplung Zwischenwelle: 22-4	22-4 - Axe intermédiaire et de slipper	Gruppo slipper e albero secondario: 22-4	Montaje del slipper y eje de unión: 22-4
TLR232040	Front/Side Drive Belt: 22-4 2.0	Antriebsriemen Front/Seite: 22-4 2.0	22-4 2.0 - Courroie avant et latérale	Cinghia trasmissione anteriore/laterale: 22-4 2.0	Correa de transmisión delantera/lateral: 22-4 2.0
TLR232041	Rear Drive Belt: 22-4 2.0	Antriebsriemen Heck: 22-4 2.0	22-4 2.0 - Courroie arrière	Cinghia trasmissione posteriore: 22-4 2.0	Correa de transmisión trasera: 22-4 2.0
TLR232042	Drive Belt Adjustment Inserts: 22-4 2.0	Riemenantriebseinstelleinsätze: 22-4 2.0	22-4 2.0 - Cales de réglage de courroie	Inserti regolazione cinghia: 22-4 2.0	Cuñas de ajuste de correa: 22-4 2.0
TLR232043	Grooved Slipper Plate Set: 22-4 2.0	Rutschkupplungsplatten: 22-4 2.0	22-4 2.0 - Plateau de slipper rainuré	Set piastra Slipper scanalata: 22-4 2.0	Plato de slipper ranurado: 22-4 2.0
TLR232044	CVA Driveshaft Set Complete (2): 22-4 2.0	CVA Antriebswellenset komplett (2): 22-4 2.0	22-4 2.0 - Cardans CVD complets (2)	Set completo albero trasmissione CVA (2): 22-4 2.0	Eje de transmisión completo CVA (2): 22-4 2.0
TLR232045	CVA Driveshaft Bone (2): 22-4 2.0	CVA Antriebswelle Knochen	22-4 2.0 - Tiges de cardans CVD (2)	Snodo albero trasmissione CVA (2): 22-4 2.0	Varillas del eje de transmisión (2): 22-4 2.0

Part #	English	Deutsch	Français	Italiano	Español
TLR232046	Drive & Differential Pulley Set: 22-4/2.0	Antriebs u. Diff Wellen Set: 22-4/2.0	22-4 / 2.0 - Set de poulies de guidage et de différentiel	Set trasmissione e puleggia differenziale: 22-4 2.0	Transmisión y Polea diferencial: 22-4/2.0
TLR232047	Complete Gear Diff, Front/Rear: 22-4 2.0	Differential kpl. v/h:22-4 2.0	22-4 2.0 - Pignon de différentiel complet avant/arr.	Ingran. differenziale completo anter/poster. : 22-4 2.0	Engranaje diferencial completo, delantero/trasero: 22-4 2.0
TLR232048	Seal Set, Gear Diff (2): 22-4 2.0	Dichtungssset Getriebe (2): 22-4 2.0	22-4 2.0 - Set de joint, pignon de différentiel	Set guarnizioni, ingran. differenziale (2) : 22-4 2.0	Conjuntos, engranaje diferencial (2): 22-4 2.0
TLR232049	Outdrives, Gear Diff (4): 22-4 2.0	Abtrieb Differential: 22-4 2.0	22-4 2.0 - Noix de sortie, pignon de différentiel	Trascinatori, ingran. differenziale (4): 22-4 2.0	Ruedas dentadas, engranaje diferencial (4): 22-4 2.0
TLR232050	Gear Set, Gear Diff (2): 22-4 2.0	Getriebeset Diffrenetial: 22-4 2.0	22-4 2.0 - Pignon, Pignon de différentiel	Set ingranaggi differenziale (2) : 22-4 2.0	Engranaje, engranaje diferencial (2): 22-4 2.0
TLR233000	Shock Shaft, 3.5 x 44mm, Ti-CN (2)	TLR Kolbenstange 3.5 x 44mm Ti-CN (2)	Tiges d'amortisseurs, 3.5 x 44mm, Ti-CN (2)	Albero ammortizzatore, 3.5 x 44mm, Ti-CN (2)	Vástago amortiguador TiCN 3.5x44mm (2)
TLR233003	Shock Shaft, 3.5 x 52mm, Ti-CN (2)	Stoßdämpferkolbenstange 3.5 x 52mm, Ti-CN (2)	Tiges d'amortisseur Ti-CN, 3.5 x 52mm (2)	Alberino ammort., 3.5 x 52mm, Ti-CN (2)	Vástago amortiguador TiCN 3.5x52mm (2)
TLR233005	Seal Set, X-Rings, Shock Cap O-Rings: All 22	TLR Dichtungssset X Ringe Stoßdämpferkappen O-ringe: alle 22	22 - Set de joints d'étanchéité et toriques de bouchons d'amortisseurs	Set guarnizioni, x-ring, o-ring tappo ammortizzatore: All 22	Tóricas amortiguador: Todos 22
TLR233006	Shock Bushing Set, Machined (4): All 22	TLR Stoßdämpferlager Set (4) alle 22	22 - Set de paliers d'amortisseurs usinés (4)	Set boccole ammortizzatore, fresate (4): tutti 22	Casquillos amortiguador (4): Todos 22
TLR233008	Shock Piston 12mm 1.5x2 CNC Machined (4): All22,SCTE	TLR Stoßdämpferkolben 12mm 1.5 x2 CNC gefertigt (4), alle 22, SCTE	22/SCTE - Pistons d'amortisseurs usinés CNC diamètre 12mm, 1,5x2 trous (4)	Pistone ammort. 12mm 1.5x2 lavorato CNC (4): Tutti 22,SCTE	Pistón amortiguador CNC mecanizada 12mm 1.5 x 2 (4): 22 Todos, SCTE
TLR233010	Shock Piston 12mm 1.7 x 2 CNC Machined (4): All22, SCTE	Stoßdämpferkolben 12mm 1.7 x 2 CNC gedreht (4): alle 22, SCTE	22/SCTE - Pistons d'amortisseurs usinés CNC diamètre 12mm 1,7x2 trous (4)	Pistone ammort. 12mm 1.7 x 2 fresato CNC (4): All22, SCTE	Pistón amortiguador CNC mecanizada 12mm 1.7 x 2 (4): 22 Todos, SCTE
TLR233014	Rear Shock Body Set (2): 22-4	Stoßdämpfergehäuse Set (2) 22-4	22-4 - Corps d'amortisseurs arrière (2)	Set corpo ammort. posteriore (2): 22-4	Cuerpo de amortiguador trasero (2)
TLR233021	Spring Cup, Standard & +4mm (4ea): All 22	TLR Dämpferteller Standard + 4mm (je 4) alle 22	22 - Coupelle de ressorts, standard et +4mm (4 pièces)	Tazza molla, standard & +4mm (4pz): tutti i 22	Sujección Muelle, Estándar y +4mm (4 de cada): Todos los 22
TLR234011	Suspension Pivot Ball, Molded: All 22	TLR Querlenkerhalter Kugelköpfe alle 22	22 - Boules de pivots de suspensions	Sfera perno sospensione, stampata: All 22	Bolas pasadores trapecios: Todos 22
TLR234014	Rear Arm Set: 22-4	Querlenker hinten Set: 22-4	22-4 - Triangles arrière	Set bracci posteriori: 22-4	Set brazo trasero: 22-4
TLR234016	Pivot Set, Rear, LRC: 22-4	Pivot Set hinten, LRC: 22-4	22-4 - Set de cales de pincement arrière LRC	Set perno posteriore, LRC: 22-4	Set trapecios, trasero, LRC: 22-4
TLR234018	Anti-Squat Tuning Set, LRC: 22-4	Anti-Squat Tuning Set, LRC: 22-4	22-4 - Cales de réglage d'anti-cabrage	Set messa a punto anti-squat, LRC: 22-4	Set ajuste Anti-Squat, LRC: 22-4
TLR234021	Shock Tower Set: 22-4	Stoßdämpferbrücken-Set: 22-4	22-4 - Set de supports d'amortisseurs	Set torre ammortizzatore: 22-4	Soporte del amortiguador: 22-4
TLR234023	King Pin Screws (8): 22-4	King Pin Schrauben (8): 22-4	22-4 - Pivots de fusées (8)	Viti perni king (8): 22-4	Tornillos Mangueta (8): 22-4
TLR234024	Servo & Steering Horn Set: 22-4	Servo und Lenkhorn Set: 22-4	22-4 - Bras de servo et de direction	Set squadrette servi e sterzo: 22-4	Brazos de servo y de dirección: 22-4
TLR234028	Ball Stud, 4.8mm x 5mm (4)	Kugelköpfe 4.8 x 5mm (4)	Rotules 4,8 x 5mm (4)	Attacchi a sfera, 4.8mm x 5mm (4)	Perno de bola 4.8 x 5mm (4)
TLR234037	Rear Hinge Pin Set: 22-4	Querlenkerstift hinten: : 22-4 2.0	22-4 - Axe de suspension arrière	Set perni cerniere poster. : 22-4	Eje de suspensión trasero: 22-4
TLR234059	Turnbuckle, HD, 50mm (2): 22/22-4	TLR 22 3.0 Gewindestange HD, 50mm (2) : 22/22-4	22/22-4 - Bielles, renforcées, 50mm (2)	Tenditore, HD, 50mm (2): 22/22-4	Tirante, HD, 50mm (2): 22/22-4
TLR234060	Turnbuckle, HD, 55mm (2): 22/22-4	TLR 22 3.0 Gewindestange HD, 55mm (2) : 22/22-4	22/22-4 - Bielles, renforcées, 55mm (2)	Tenditore, HD, 55mm (2): 22/22-4	Tirante, HD, 55mm (2): 22/22-4
TLR234061	Front Arm Set: 22-4 2.0	Querlenker vorne Set: 22-4 2.0	22-4 2.0 - Triangles avant	Set bracci anteriori: 22-4 2.0	Set brazo delantero: 22-4 2.0
TLR234062	Front Camber Block: 22-4/2.0	Spurstangenhalter: : 22-4 2.0	22-4 / 2.0 - Cales de carrossage avant	Blocco camber anteriore: 22-4/2.0	Tabica camber delantera: 22-4/2.0
TLR234063	Front Hinge Pin Set: 22-4 2.0	Querlenkerstift vorne: : 22-4 2.0	22-4 2.0 - Axe de suspension avant	Set perni cerniere anter. : 22-4 2.0	Eje de suspensión delantero: 22-4 2.0
TLR234064	Front Spindle Set: 22-4/2.0	Achsschenkelset vorne: 22-4/2.0	22-4 / 2.0 - Set de fusées avant	Set fuso anteriore: 22-4/2.0	Mangueta delantera: 22-4/2.0

Part #	English	Deutsch	Français	Italiano	Español
TLR234065	Rear Hub Carrier, 22 Std Hex (2): All 22/22-4 2.0	Radträger hinten, 22 Std Hex (2): alle 22/22-4 2.0	22 / 22-4 2.0 - Fusées arrières avec hexagones standard 22 (2)	Portamozzo posteriore, 22 std Hex (2): tutti 22/22-4 2.0	Soporte de cubo trasero con hexágonos estándar 22 (2): Todo 22/22-4 2.0
TLR235003	Flat Head Screws, M2.5 x 6mm (10)	Flachkopfschrauben, M2,5 x 6mm (10)	Vis FHC M2.5 x 6mm	Viti a testa piatta, M2.5 x 6mm (10)	Tomillo cónico, M2.5 x 6mm (10)
TLR235004	Flat Head Screws, M3 x 25mm (10)	Flachkopfschrauben, M3 x 25mm (10)	Vis FHC M3 x 25mm	Viti a testa piatta, M3 x 25mm (10)	Tomillo cónico, M3 x 25mm (10)
TLR236001	4mm Low Profile Serrated Nuts (4)	TLR: Flache Riffelschrauben 4mm (4)	Ecrous striés M4 taille basse (4)	Dadi dentellati a basso profilo 4mm (4)	Tuercas Serradas Bajo Perfil 4mm (4)
TLR236005	Caster Block Alum Ballstud Spacers (4ea): 22-4	Achsschenkelträger mit Kugelkopfdistanzstücke (je 4): 22-4	22-4 - Entretoises de rotules en aluminium (4 pcs)	Blocco allum. caster distanziali attacchi a sfera (4 cad): 22-4	Portamanguetas en aluminio (4): 22-4
TLR237001	5 x 10 x 3mm Bearings (2)	TLR 5 x 10 x 3mm Lager (2)	Roulements 5 x 10 x 3mm (2)	5 x 10 x 3mm cuscinetti (2)	Rodamientos 5x10x3mm (2)
TLR237002	Steering Bearing Set (4): 22-4	Kugelkopf Lenkung (4): 22-4	22-4 - Roulements de direction (4)	Set cuscinetti sterzo (4): 22-4	Rodamientos de dirección (4): 22-4
TLR2972	Driveshaft Rebuild Kit: All 22	Antriebswellen Rebuild Kit: All 22	22 - Kit de réparation arbre de transmission	Driveshaft Rebuild Kit: All 22	Kit para reconstruir el árbol transmisión: Todos 22
TLR330003	Cab FWD Body & Wing Set, Clear,w/stickers: 22-4	Cab Vorwärtskarosserie und Flügel, transparent mit Aufkleber: 22-4	22-4 - Carrosserie Cab Forward avec aileron, transparente avec autocollants	Set carrozzeria e alettone, trasparente c/adesivi: 22-4	Carrocería Cab Forward con alerón, transparente con pegatinas: 22-4
TLR332012	Front Driveshaft Set, CVA, Complete: 22-4	Antriebswellenset vorne, CVA kpl.: 22-4	22-4 - Set de cardans avant CVA complets	Set albero trasmissione anter. CVA, completo: 22-4	Eje de transmisión delantero completo, CVA: 22-4
TLR332039	Front Driveshafts, CVA (2): 22-4	Antriebswellen vorne, CVA (2): 22-4	22-4 - Tiges de cardans avant CVA (2)	Alberi anteriori, CVA (2): 22-4	Eje de transmisión delantero, CVA (2): 22-4
TLR334006	Sway Bar Kit, Front & Rear: 22-4	Querstabilisator vorne / hinten: 22-4	22-4 - Kit de barres anti-roulis av. et arr.	Kit barra oscillante, anter. & poster.: 22-4	Barras estabilizadora, delantera y trasera: 22-4
TLR334024	Rear Pivot, LRC, 2.5 Deg Toe: 22-4	Querlenkerhalter LRC, 2.5° 22-4	22-4 - Fusées arrière LRC, 2.5° de pincement	Perno posteriore, LRC, convergenza 2,5°: 22-4	Trapezios trasero LRC, 2.5°: 22-4
TLR334026	Rear Camber Block, Vertical Ball Stud: 22-4	TLR Aufhängungshalter hinten, senkrechter Kugelkopf: 22-4	22-4 - Cale de carrossage arrière, rotules verticales	Blocco camber poster., attacco sfera vert.: 22-4	Tabica camber trasera, perno de bola vertical : 22-4/2.0
TLR334027	Caster Block Set, 12.5 degrees, Aluminum: 22-4	C.Hub 12.5° Alu: 22-4	22-4 - Set d'étriers porte fusées 12,5° en aluminium	Set blocco castor, 12.5 gradi, alluminio: 22-4	Set portamanguetas en aluminio 12.5°: 22-4
TLR336000	4mm Aluminum Serrated Lock Nuts, Black (6)	TLR 4mm Aluminium Stopmutter mit Flanch Schwarz 6St.	Ecrou auto-freiné épaulé M4, aluminium, noir (6)	Dado autobloccante seghettato 4mm, nero (6)	Tuercas 4mm aluminio con bloqueo, negras (6)
TLR43004	Front Wheel, Yellow (2): 22-4	Vorderad Gelb (2)	22-4 - Jantes avant jaunes (2)	Ruota anteriore, gialla (2): 22-4	Rueda delantera, Amarilla (2): 22-4
TLR5065	Bleeder Shock Caps, Alum (2): 22/T	TLR Stoßdämpferkappen Set (2): 22/T	22/T - Bouchons d'amortisseurs en aluminium avec purgeurs (2)	Tappo sfiato ammortizzatori, allum. (2): 22/T	Tapa superior amortiguador aluminio (2): 22/T
TLR5066	Bleeder Shock Cap Screw & Washers (4): 22/T	Stoßdämpfervolumenausgleichkappe, Schraube und Unterlegscheibe (4) 22/T	22/T - Vis de purge avec joints (4)	Vite e rondelle tappo sfiato ammortizzatore. (4): 22/T	Tornillo y arandela tapa superior amortiguador (4): 22/T
TLR5083	Front Shock Body Set (2): 22	TLR Dämpfergehäuse-Set Vorne (2): 22	22 - Set de corps d'amortisseurs avant (2)	Set corpo ammortizzatore anter. (2): 22	Cuerpo amortiguador delantero (2): 22
TLR5086	Shock Cap: Bottom (2): 22	TLR Stoßdämpferendkappe unten (2):22	22 - Bouchons inférieurs d'amortisseurs (2)	Tappo ammort.: inferiore (2): 22	Tapa inferior amortiguador (2): 22
TLR5092	Upper Shock Bushing (4): 22	TLR Buchsen für Dämpfer: 22 (4)	22 - Entretoises supérieures d'amortisseurs (4)	Boccola superiore ammort. (4): 22	Casquillo sujeción superior amortiguadores (4): 22
TLR5094	Shock Preload Adjuster Nut w/O-ring: 22	TLR Stoßdämpfer Rändelmutter m. O-Ring	22 - Bague de réglage d'amortisseurs avec joint torique	Dado regolazione precarico ammort. senza O-ring: 22	Tuerca ajuste amortiguador con tórica: 22
TLR5095	Shock End Set w/Spring Cups, 12mm Shock: 22	TLR Endkugelpfanne / Federsteller, 12mm Dämpfer: 22	22 - Chapes et coupelles d'amortisseurs 12mm	Terminale ammort. c/molla a tazza, 12mm: 22	Rótula y soporte muelle amortiguador 12mm: 22
TLR5096	Shock Limiter Set, 3.5mm Shaft: 22	TLR Einfederbegrenzung-Set, 3.5mm: 22	22 - Butées d'amortisseurs 3,5mm	Set limitatore ammort., albero 3,5mm.: 22	Limitadores amortiguador, vástago 3.5mm: 22
TLR5097	Shock Standoff (2): 22	TLR Dämpferhalter: 22	22 - Entretoises d'amortisseurs (2)	Supporto ammortizzatore (2): 22	Sujeción superior amortiguador (2): 22
TLR5167	Rear Shock Spring, 2.0 Rate, Yellow	Dämpferfeder hinten, Federkonstante 2,0, gelb	Ressort d'amortisseurs arrière, jaune, dureté 2,0	Molla ammortizzatore, posteriore, 2,0 gialla	Muelle, Trasero, 2,0 Amarillo
TLR5183	Front Shock Spring, 3.8 Rate, Blue: 22T	TLR Federsatz vorne 3.8,blau: 22T	22T - Ressort d'amortisseurs avant, bleus, dureté 3,8	Molla ammort. anteriore, 3.8 Rate, blu: 22T	Muelle amortiguador delantero, durezo 3.8, azul

Part #	English	Deutsch	Français	Italiano	Español
TLR5286	Silicone Diff Fluid, 50,000CS	TLR Silikon Diff Öl ,50.000CS	Graisse silicone pour différentiel, 50000CS	Fluido silicone diff, 50,000CS	Silicona diferencial 50000CS
TLR5900	Button Head Screws, M3 x 5mm (10)	TLR Rundkopfschraube, M3 x 5mm (10)	Vis à tête bombée M3 x 5mm (10)	Viti testa tonda, M3 x 5mm (10)	Tornillo botón 3 x 5mm (10)
TLR5902	Button Head Screws, M3 x 8mm (10)	TLR Rundkopfschraube, M3 x 8mm (10)	Vis à tête bombée M3 x 8mm (10)	Viti testa tonda, M3 x 8mm (10)	Tornillo botón 3 x 8mm (10)
TLR5903	Button Head Screws, M3 x 10mm (10)	TLR Rundkopfschraube, M3 x 10mm (10)	Vis à tête bombée M3 x 10mm (10)	Viti testa tonda, M3 x 10mm (10)	Tornillo botón 3 x 10mm (10)
TLR5904	Button Head Screws, M3 x 12mm (10)	TLR Rundkopfschraube, M3 x 12mm (10)	Vis à tête bombée M3 x 12mm (10)	Viti testa tonda, M3 x 12mm (10)	Tornillo botón 3 x 12mm (10)
TLR5905	Button Head Screws, M3 x 18mm (10)	TLR Rundkopfschraube, M3 x 18mm (10)	Vis à tête bombée M3 x 18mm (10)	Viti testa tonda, M3 x 18mm (10)	Tornillo botón 3 x 18mm (10)
TLR5910	Button Head Screws, M3 x 14mm (10)	TLR Rundkopfschraube, M3 x 14mm (10)	Vis à tête bombée M3 x 14mm (10)	Viti testa tonda, M3 x 14mm (10)	Tornillo botón 3 x 14mm (10)
TLR5961	Flat Head Screw, M3 x 8mm (10)	TLR Flachkopfschrauben, M3 x 8mm (10)	Vis à tête fraisée M3 x 8mm (10)	Vite a testa piatta, M3 x 8mm (10)	Tornillo cónico 3 x 8mm (10)
TLR5962	Flat Head Screw, M3 x 10mm (10)	TLR Flachkopfschrauben, M3 x 10mm (10)	Vis à tête fraisée M3 x 10mm (10)	Vite a testa piatta, M3 x 10mm (10)	Tornillo cónico 3 x 10mm (10)
TLR5963	Flat Head Screw, M3 x 12mm (10)	TLR Flachkopfschrauben, M3 x 12mm (10)	Vis à tête fraisée M3 x 12mm (10)	Vite a testa piatta, M3 x 12mm (10)	Tornillo cónico 3 x 12mm (10)
TLR5965	Flat Head Screw, M3 x 20mm (10)	TLR Flachkopfschrauben, M3 x 20mm (10)	Vis à tête fraisée M3 x 20mm (10)	Vite a testa piatta, M3 x 20mm (10)	Tornillo cónico 3 x 20mm (10)
TLR6017	Rod End, 4mm Turnbuckle (12): 22SCT	Kugelpfannen Hinten (12): 22SCT	22SCT - Chapes de biellettes 4mm (12)	Terminale barra, tenditore 4mm (12): 22SCT	Rótulas, tensores 4mm (12): 22SCT
TLR6019	Ballstud/Hub Spacer Set, Aluminum: 22	TLR Distanzringe für Kugelkopf Aluminium: 22	22 - Rotules à visser et entretoises en aluminium	Perno sferico/set distanziali, alluminio: 22	Arandelas ajuste bola/mangueta aluminio: 22
TLR6024	Ball Stud, 4.8 x 8mm (4): 22	TLR Kugelkopf mit Gewinde, 4.8 x 8mm (4): 22	22 - Rotules à visser 4,8 x 8mm (4)	Perno sferico, 4.8 x 8mm (4): 22	Bola con tornillo 4.8 x 8mm (4): 22
TLR6025	Ball Stud, 4.8 x 6mm (4): 22	TLR Kugelkopf mit Gewinde 4.8mm x 6mm (4): 22	22 - Rotules à visser 4,8 x 6mm (4)	Perno sferico, 4.8 x 6mm (4): 22	Bola con tornillo 4.8 x 6mm (4): 22
TLR6028	Ball Stud, Short Neck, 5mm (2)	TLR Kugelkopf mit Gewinde kurzen Hals, 5mm (2)	Rotules à visser courtes 5mm (2)	Perno sferico, Short Neck, 5mm (2)	Bola con tornillo cuello corto 5mm (2)
TLR6105	E-Clips, 3mm Shaft (12)	TLR E-Clipse, 3mm (12)	Clips pour arbre 3mm (12)	E-Clips, 3mm Shaft (12)	E-Clips 3mm (12)
TLR6276	Set Screw, M2.5 x 5mm, Cup Point (10)	TLR Schraubenset, M2.5 x 5mm, Cup Point (10)	Vis sans tête bout bombé M2,5x5mm (10)	Grano, M2.5 x 5mm, punta piana (10)	Tornillo allen 2.5 x 5mm (10)
TLR6288	Set Screw, M3 x 2.5mm (10)	TLR Schraubenset, M3 x 2.5mm (10)	Vis sans tête, M3 x 2.5mm (10)	Grano, M3 x 2.5mm (10)	Tornillos allen, M3 x 2.5mm (10)
TLR6312	Locknut, M2.5 x .45 x 5mm (6)	TLR Mutter selbstsichernd M2.5 x .45 x 5mm (6)	Écrou M2,5 x 0,45 x 5mm (6)	Dado autobloccante, M2.5 x .45 x 5mm (6)	Tuercas autoblocantes 2.5 x 0.45 x 5mm (6)
TLR6313	Locknut, M3 x .5 x 5.5mm (10)	TLR Mutter selbstsichernd M3 x .5 x 5.5mm (10)	Écrou M3 x 0,5 x 5,5mm (10)	Dado autobloccante, M3 x .5 x 5.5mm (10)	Tuercas autoblocantes 3 x 0.5 x 5.5mm (6)
TLR6352	Washers, M3 (10)	TLR U-Scheibe, M3 (10)	Rondelles M3 (10)	Rodelle, M3 (10)	Arandelas M3 (10)
TLR6932	5x10x4mm HD Bearings (2)	TLR Kugellager 5 x 10 x 4mm (2)	Roulements renforcés 5x10x4mm (2)	5x10x4mm HD Cuscinetti (2)	Rodamientos HD 5 x 10 x 4mm (2)
TLR7101	Rear Wheel, Yellow (2): 22	TLR Felge hinten, Gelb (2): 22	22 - Jantes arrière jaunes (2)	Ruota posteriore, gialla (2): 22	Llanta trasera amarilla (2): 22
TLR77000	High-Pressure Black Grease, 8cc	TLR High-Pressure Fett Schwarz/8cc	Graisse noire haute pression, 8cc	Grasso nero alta pressione, 8cc	Grasa negra alta presión 8cc
TLR8202	Body Clips, Black (12): 22	TLR Karosseriekammern Schwarz (12): 22	22 - Clips de carrosserie noirs (12)	Clips carrozzeria, neri (12): 22	Clips carrocería negros (12): 22



# OPTIONAL PARTS / DIVERSE TEILE / PIÈCES OPTIONNELLES / PARTI OPZIONALI / PIEZAS OPCIONALES

Part #	English	Deutsch	Français	Italiano	Español
TLR0547	TLR OGIO Pit Bag	TLR OGIO Pit Bag	Sac de transport TLR OGIO	Borsa TLR OGIO	Bolsa de transporte TLR OGIO
TLR0548	TLR OGIO Backpack	TLR OGIO Rucksack	Sac à dos TLR Ogio	Zaino TLR OGIO	Mochila TLR OGIO
TLR230003	Hook and Loop Body Mounting, 10 x 20mm: (8)	TLR Klettband 10 x20mm (8)	Bandes auto-agrippantes pour fixation de carrosserie, 10x20mm (8)	Attacco a strappo per montaggio carrozzeria, 10 x 20mm: (8)	Sujeción carrocería 10x20mm: (8)
TLR232009	HDS Spur Gear, 76T 48P, Kevlar: All 22	TLR HDS Zahnrad 76T 48P Kevlar: alle 22	22 - Couronne Kevlar HDS, 76T 48P	Corona HDS, 76T 48P, Kevlar: All 22	Corona central HDS Kevlar 76T 48P: Todos 22
TLR232010	HDS Spur Gear, 78T 48P, Kevlar: ALL 22	TLR HDS Zahnrad 78T 48P Kevlar: alle 22	22 - Couronne Kevlar HDS, 78T 48P	Corona HDS, 78T 48P, Kevlar: All 22	Corona central HDS Kevlar 78T 48P: Todos 22
TLR232011	HDS Spur Gear, 82T 48P, Kevlar: All 22	TLR HDS Zahnrad 82T 48P Kevlar: alle 22	22 - Couronne Kevlar HDS, 82T 48P	Corona HDS, 82T 48P, Kevlar: All 22	Corona central HDS Kevlar 82T 48P: Todos 22
TLR232017	Outdrive Set: 22-4	Abtriebs-Set: 22-4	22-4 - Noix de sortie de différentiel	Set trascinateore: 22-4	Set Rueda dentada: 22-4
TLR232019	Front Driveshaft Assembly (2): 22-4	Antriebswelle vorne (2): 22-4	22-4 - Cardan avant complet (2)	Gruppo albero anteriore (2): 22-4	Montaje del eje de transmisión delantero (2): 22-4
TLR232020	Rear Driveshaft Assembly (2): 22-4	Antriebswelle hinten (2): 22-4	22-4 - Cardan arrière complet (2)	Gruppo albero posteriore (2): 22-4	Montaje del eje de transmisión trasero (2): 22-4
TLR232023	One-Way/Clicker Set: 22-4	Freilauf Set: 22-4	22-4 - Roue libre	Set ruota libera/clicker: 22-4	Rueda libre/clicker: 22-4
TLR232026	Diff Service Kit, Tungsten Balls: 22-4	Diff Wartungsset: 22-4	22-4 - Kit de réparation de différentiel, billes tungstène	Kit manutenzione diff., sfere in tungsteno: 22-4	kit de reparación diferencial, bolas de tungsteno: 22-4
TLR233009	Shock Piston 12mm 1.6x2 CNC Machined(4): All22,SCTE	TLR Stoßdämpferkolben 12 1.6x2 CNC (4) alle 22, SCTE	22/SCTE - Pistons d'amortisseurs usinés CNC diamètre 12mm, 1,6x2 trous (4)	Pistone ammortizzatore 12mm 1.6x2 prodotto con CNC (4): All 22,SCTE	Pistón amortiguador CNC mecanizado 12mm 1.6 x 2 (4): Todos 22, SCTE
TLR233011	Shock Piston 12mm Blank CNC Machined(4): All22,SCTE	TLR Stoßdämpferkolben 12mm CNC gefertigt (4) Alle 22, SCTE	22/SCTE - Pistons d'amortisseurs usinés CNC diamètre 12mm, à percer (4)	Pistone ammortizzatore 12mm Blank fresato (4): All 22,SCTE	Pistón amortiguador 12mm mecanizado CNC (4): Todos 22, SCTE
TLR233013	Rear Spring Set, Low Frequency (4 pair): 22/2.0	TLR Federset hinten. Geringe Federrate (4 paar) 22/2.0	22/2.0 - Set de ressorts arrière basse fréquence, (4 paires)	Set molle posteriori, bassa frequenza (4 coppie): 22/2.0	Muelles traseros, Baja Frecuencia (4 pares): 22/2.0
TLR233017	Shock Piston 12mm 1.3x3 CNC Machined(4): All 22, SCTE	TLR Stoßdämpferkolben 12mm 1.3x3 CNC gefertigt (4) Alle 22, SCTE	22/SCTE - Pistons d'amortisseurs usinés CNC diamètre 12mm 1.3x3, à percer (4)	Pistone ammortizzatore 12mm 1.3x3 Blank fresato (4): All 22,SCTE	Pistón amortiguador 12mm 1.3x3 mecanizado CNC (4): Todos 22, SCTE
TLR233018	Shock Piston 12mm 1.4x3 CNC Machined(4):All22,SCTE	TLR Stoßdämpferkolben 12mm 1.4x3 CNC (4) alle 22, SCTE	22/SCTE - Pistons d'amortisseurs usinés CNC diamètre 12mm 1.4x3 trous (4)	Pistone ammortizzatore 12mm 1.4x3 prodotto con CNC (4): All 22,SCTE	Pistón amortiguador CNC mecanizado 12mm 1.4x3 (4): Todos 22, SCTE
TLR234016	Pivot Set, Rear, LRC: 22-4	Pivot Set hinten, LRC: 22-4	22-4 - Set de cales de pincement arrière LRC	Set perno posteriore, LRC: 22-4	Trapezios, trasero, LRC : 22-4
TLR234017	Pivot Set, Rear, HRC: 22-4	Pivot Set hinten, HRC: 22-4	22-4 - Set de cales de pincement arrière HRC	Set perno, posteriore, HRC: 22-4	Trapezios, trasero, HRC : 22-4
TLR234025	Castor Block Set, 10 degrees, Aluminum: 22-4	C.Hub 10° Alu: 22-4	22-4 - Set d'étriers porte fusées 10° en aluminium	Set blocco castor, 10 gradi, alluminio: 22-4	Set portamanguetas en aluminio 10 °: 22-4
TLR234026	Castor Block Set, 15 degrees, Aluminum: 22-4	C.Hub 15° Alu: 22-4	22-4 - Set d'étriers porte fusées 15° en aluminium	Set blocco castor, 15 gradi, alluminio: 22-4	Set portamanguetas en aluminio 15°: 22-4
TLR234027	Castor Block Set, 20 degrees, Aluminum: 22-4	C.Hub 20° Alu: 22-4	22-4 - Set d'étriers porte fusées 20° en aluminium	Set blocco castor, 20 gradi, alluminio: 22-4	Set portamanguetas en aluminio 20°: 22-4
TLR237000	5x8x2.5mm Bearings (2)	TLR 5 x8x2.5mm Lager (2)	Roulements 5 x 8 x 2.5mm	5 x 8 x 2.5mm cuscinetti (2)	Rodamientos 5x8x2.5mm (2)
TLR2930	Rear Hex, Standard Width, Aluminum: 22	Hinterer Sechskant, Standardbreite, Aluminum, 22	22 - Écrou hex AR, largeur standard, aluminium	Dado posteriore, larghezza standard, alluminio, 22	Hexágono trasero, Estándar Aluminio, 22
TLR2931	Rear Hex, +.75mm Width, Aluminum: 22	TLR Spurverbreiterung +.75mm Breite Aluminum: 22	22 - Hexagone arrière en aluminium, largeur +0,75mm	Esagono poster., largo +.75mm, alluminio: 22	Hexágonos rueda trasera +0.75mm aluminio: 22
TLR331004	TLR 22-4 Chassis Protective Tape Precut (2)	Chassis Schutzfolie vorge-schnitten (2) TLR 22-4	22-4 - Protection adhésive de châssis prédécoupée (2)	TLR 22-4 nastro protettivo telaio, pretagliato (2)	Protección adhesiva del chasis precortada (2)
TLR331012	Servo Mount, Aluminum: 22-4	Servo Halter Alu: 22-4	22-4 - Support de servo en aluminium	Supporto servo, alluminio: 22-4	Soporte de servo en aluminio: 22-4

Part #	English	Deutsch	Français	Italiano	Español
TLR331013	Skid Plate, Chassis (8): 22-4	Skid Plate, Chassis (8): 22-4	22-4 - Patins de protection de châssis (8)	Piastra pattino, telaio (8): 22-4	Cubrecárter, chasis (8): 22-4
TLR334006	Sway Bar Kit, Front & Rear: 22-4	Querstabiset v +h: 22-4	22-4 - Kit de barres anti-roulis av et arr	Kit barra oscillante, anter. & poster.: 22-4	Barras estabilizadora, delantera y trasera: 22-4
TLR334009	Steering Bellcrank Set, Aluminium: 22-4	Lenkhebel Set Alu: 22-4	22-4 - Set de renvois de direction en aluminium	Set squadrette sterzo, alluminio: 22-4	Pivotes de dirección, aluminio: 22-4
TLR334010	Servo Horn, 23T, Aluminium: 22-4	Servo Horn, 23T, Alu: TLR 22-4	22-4 - Bras de servo en aluminium, 23T	Squadretta servo, 23T, alluminio: 22-4	Pata del servo en aluminio, 23T: 22-4
TLR334011	Servo Horn, 24T, Aluminium: 22-4	Servo Horn, 24T, Alu: TLR 22-4	22-4 - Bras de servo en aluminium, 24T	Squadretta servo, 24T, alluminio: 22-4	Pata del servo en aluminio, 24T: 22-4
TLR334012	Servo Horn, 25T, Aluminium: 22-4	Servo Horn, 25T, Alu: TLR 22-4	22-4 - Bras de servo en aluminium, 25T	Squadretta servo, 25T, alluminio: 22-4	Pata del servo en aluminio, 25T: 22-4
TLR334013	HD Turnbuckle Set, Titanium: 22-4	Gewindestangenset Titan: 22-4	22-4 - Set de biellettes en titane	HD set tenditori, titanio: 22-4	HD Tensores, Titanio: 22-4
TLR334014	Rear Hub Carrier, Aluminium: 22/2.0/T/SCT	Radträger hinten Alu: 22 2.0/T/SCT	22/2.0/SCT - Fusées arrières en aluminium	Supporto mozzo posteriore, alluminio: 22/2.0/T/SCT	Mangueta trasera aluminio: 22/2.0/T/SCT
TLR334023	Rear Pivot, LRC, 2.0 Deg Toe: 22-4	Querlenkerhalter hinten LRC, 2.5° 22-4	22-4 - Fusées arrière LRC, 2° de pincement	Perno posteriore, LRC, convergenza 2,0°: 22-4	Trapecios trasero LRC, 2.0°: 22-4
TLR336001	4mm Aluminum Serrated Lock Nuts, Blue (6)	TLR 4mm Aluminium Stopmutter mit Flansch Blau (6).	Écrou auto-freiné épaulé M4, aluminium, bleu (6)	Dado autobloccante 4mm dentellato, blu (6)	Tuercas 4mm aluminio con bloqueo, azul (6)
TLR336002	TLR 22 Series Hardware Box, Metric: 22/T/SCT/22-4	TLR22 Serie Kleinteilebox Metrich: 22/T/SCT/22-4	22/T/SCT/22-4 - Boîte de visserie métrique pour TLR 22	TLR22 Set Hardware Metrico 22/T/SCT/22-4	TLR22 Caja de tornillos, métrico 22/T/SCT/22-4
TLR336003	M4 Aluminum Serrated Nuts, Low Profile, Black (4)	M4 Aluminiumschrauben geriffelt schwarz (4)	Écrou strié M4 taille basse en aluminium, noir (4)	Dadi dentellati allum. M4, basso profilo, nero (4)	Tuerca dentada M4 de perfil bajo en aluminio, negra (4)
TLR336004	M3 Aluminum Lock Nuts, Black (10)	M3 Aluminum Stopmmuttern Schwarz (10)	Écrou auto-freiné M3 en aluminium, noir (10)	Dadi autobloccanti allum. M3, neri (10)	Tuerca de bloqueo M3 en aluminio, negra (10)
TLR336005	M3 Flanged Aluminum Lock Nuts, Black (10)	M3 Aluminium Stopmmutter mit Bund Schwarz (10)	Écrou auto-freiné épaulé M3 en aluminium, noir (10)	Dadi autobloccanti allum. flangiati M3, neri (10)	Tuerca de bloqueo embreada M3 en aluminio, negra (10)
TLR4166	Titanium Shock Mounts (4): 22	TLR Titan Dämpferbefestigung (4): 22	22 - Fixations d'amortisseurs en titane	Supporti ammortizzatori in titanio (4): 22	Sujeción superior amortiguadores titanio (4): 22
TLR43005	Front Wheel, White (2): 22-4	Vorderad Weiss (2)	22-4 - Jantes arrière blanches (2)	Ruota anteriore, bianca (2): 22-4	Rueda delantera, Blanca (2): 22-4
TLR43013	61mm Front Wheel, 12mm Hex, White (2): 22-4	TLR Felge vorne 61 mm, weiß (2 Stk): 22-4	22-4 - Jantes avant 61mm, Hexagone 12mm, Blanches (2)	Ruota anter. 61mm, esagono 12mm, bianca (2): 22-4	Rueda delantera 61mm, hexágono 12mm, Blancas (2): 22-4
TLR43014	61mm Front Wheel, 12mm Hex, Yellow (2): 22-4	TLR Felge vorne 61 mm, gelb (2 Stk): 22-4	22-4 - Jantes avant 61mm, Hexagone 12mm, Jaunes (2)	Ruota anter. 61mm, esagono 12mm, gialla (2): 22-4	Rueda delantera 61mm, hexágono 12mm, Amarillas (2): 22-4
TLR43015	61mm Rear Wheel, 12mm Hex, White (2): 22/22-4	TLR 22 3.0 61mm Felge hinten 12mm Inbus, weiss	22/22-4 - Jantes avant 61mm, Hexagone 12mm, Blanches (2)	Ruota posteriore 61mm, 12mm Hex, bianca (2): 22 3.0	Llanta Trasero 61mm. Hexágono 12mm, Blanca (2): 22 3.0
TLR43016	61mm Rear Wheel, 12mm Hex, Yellow (2): 22/22-4	TLR 22 3.0 61mm Felge hinten 12mm Inbus, gelb	22/22-4 - Jantes avant 61mm, Hexagone 12mm, Jaunes (2)	Ruota posteriore 61mm, 12mm Hex, gialla (2): 22 3.0	Llanta Trasero 61mm. Hexágono 12mm, Amarilla (2): 22 3.0
TLR5166	Rear Shock Spring, 1.8 Rate, White	Dämpferfeder hinten weiss, 1.8 Rate	Ressorts arrières, dureté 1,8, blancs	Molle ammort. posteriori, gradazione 1.8, Bianche	Muelle amortiguador trasero, durezo 1.8, blanco
TLR5168	Rear Shock Spring, 2.3 Rate, Pink	TLR Federnpaar Hinten, 2.3 Race, Pink	Ressorts arrière, dureté 2.3, rose	Molle ammort. posteriori, grado 2.3 colore rosa.	Muelle amortiguador trasero, durezo 2.3, rosa
TLR5182	Front Shock Spring, 3.5 Rate, Green: 22T	TLR Feder Vorne 3.5 Rate, Grün: 22T	22T - Ressorts avant, dureté 3.5, vert	Molle ammort. anteriori, grado 3.5, colore verde.	Muelle amortiguador delantero, durezo 3.5, verde: 22T
TLR5184	Front Shock Spring, 4.1 Rate, Black: 22T	TLR Federnsatz Vorn 4.1 Schwarz: 22T	22T - Ressorts avant, dureté 4.1, noir	Molle ammort. anteriori, grado 4.1, colore nero.	Muelle amortiguador delantero, durezo 4.1, negro: 22T
TLR5282	Silicone Diff Fluid, 10,000CS	TLR Silikon Diff Öl ,10.000CS	Graisse silicone pour différentiel, 10000CS	Fluido silicone diff, 10,000CS	Silicona diferencial 10000CS
TLR5283	Silicone Diff Fluid, 15,000CS	TLR Silikon Diff Öl ,15.000CS	Graisse silicone pour différentiel, 15000CS	Fluido silicone diff, 15,000CS	Silicona diferencial 15000CS
TLR5284	Silicone Diff Fluid, 20,000CS	TLR Silikon Diff Öl ,20.000CS	Graisse silicone pour différentiel, 20000CS	Fluido silicone diff, 20,000CS	Silicona diferencial 20000CS
TLR5285	Silicone Diff Fluid, 30,000CS	TLR Silikon Diff Öl ,30.000CS	Graisse silicone pour différentiel, 30000CS	Fluido silicone diff, 30,000CS	Silicona diferencial 30000CS
TLR6030	Titanium Ball Stud, 4.8 x 6mm (2)	TLR Titan Kugelköpfe, 4.8 x 6mm (2)	Rotule en titane, 4,8 x 6mm (2)	Perno sferico, titanio, 4,8 x 6mm (2)	Bola con tornillo 4.8 x 6mm (2)
TLR6031	Titanium Ball Stud, 4.8 x 8mm (2)	TLR Titan Kugelköpfe, 4.8 x 8mm (2)	Rotule en titane, 4,8 x 8mm (2)	Perno sferico, titanio, 4,8 x 8mm (2)	Bola con tornillo 4.8 x 8mm (2)

Part #	English	Deutsch	Français	Italiano	Español
TLR7100	Rear Wheel, White (2): 22	TLR Felge hinten, Weiss (2): 22	22 - Jantes arrière blanches (2)	Ruota posteriore, bianca (2): 22	Llanta trasera blanca (2): 22
TLR72000	Ball Cup Wrench, 4.8mm: 22/T/SCT	TLR Kugelkopf Inbus 4.8mm 22/T/SCT	22/T/SCT - Clé pour rotules 4.8mm	Chiave per attacco a sfera, 4.8mm: 22/T/SCT	Llave rótulas 4.8mm: 22/T/SCT
TLR72002	Slipper & Clicker Adjustment Tool: 22-4	TLR 22-4: Rutschkupplung Einstellwerkzeug	22-4 - Outil de réglage de dureté de la roue libre et du slipper	Attrezzo regolazione slipper & clicker: 22-4	Herramienta de ajuste de slipper y clicker: 22-4
TLR74005	Silicone Shock oil, 27.5wt, 2oz	Silikonstoßdämpferöl, 27,5wt, 2 oz	Huile silicone d'amortisseur, 27,5wt, 60 ml	Olio silicone ammortizzatori, 27.5wt, 2oz	Aceite amortiguador silicona 27.5wt, 2oz
TLR74006	Silicone Shock Oil, 30wt, 2oz	Losi Silikonstoßdämpferöl, 30wt, 2oz	Huile silicone d'amortisseur, 30wt, 60 ml	Olio silicone ammortizz., 30wt, 2oz	Aceite silicona amortiguador 30wt, 2oz
TLR74008	Silicone Shock oil, 35wt, 2oz	Silikonstoßdämpferöl, 35wt, 2 oz	Huile silicone d'amortisseur, 35wt, 60 ml	Olio silicone ammortizzatori, 35wt, 2oz	Aceite amortiguador silicona 35wt, 2oz
TLR74010	Silicone Shock Oil, 40 Wt, 2 Oz	Silikonstoßdämpferöl, 40wt, 2 oz	Huile silicone d'amortisseur, 40wt, 60 ml	Olio silicone ammortizzatori, 40wt, 2oz	Aceite amortiguador silicona 40wt, 2oz
TLR75001	Silicone Diff Fluid, 40,000CS	TLR Silikon Diff Öl ,40.000CS	Graisse silicone pour différentiel, 40000CS	Fluido silicone diff, 40,000CS	Silicona diferencial 40000CS
TLR75002	Silicone Diff Fluid, 60,000CS	TLR Silikon Diff Öl ,60.000CS	Graisse silicone pour différentiel, 60000CS	Fluido silicone diff, 60,000CS	Silicona diferencial 60000CS
TLR75003	Silicone Diff Fluid, 80,000CS	TLR Silikon Diff Öl ,80.000CS	Graisse silicone pour différentiel, 80000CS	Fluido silicone diff, 80,000CS	Silicona diferencial 80000CS
TLR75004	Silicone Diff Fluid, 100,000CS	TLR Silikon Diff Öl ,100.000CS	Graisse silicone pour différentiel, 100000CS	Fluido silicone diff, 100,000CS	Silicona diferencial 100000CS
TLR76000	Tire Glue, Standard	TLR Reifenkleber Standard	Colle à pneus standard	Colla per gomme, standard	Pegamento de neumáticos estándar
TLR76004	TLR Lok, Threadlock, Blue	TLR Schraubensicherungslack Blau	Frein filet TLR Lok, bleu	TLR Lok, frenafiletto, blu	Fijatornillo TLR Lok, azul
TLR77002	Shock O-Ring Grease, 8cc	TLR Fett 8cc O-Ring	Graisse pour joints toriques d'amortisseurs, 8cc	Grasso o-ring ammort, 8cc	Grasa para junta tórica amortiguador, 8cc
TLR99004	TLR Embroidered Cargo Bag	TLR Tasche	Sac de transport TLR	Borsa ricamata TLR	Bolsa de transporte TLR
TLR99014	TLR Foam Pit Mat	TLR Schraubermatte Schaum	Tapis de stand en mousse TLR	Stuoia gommapiuma TLR	Base de trabajo foam TLR
TLR99101	Shock Shaft Pliers	TLR Zange für Dämpferkolbenstange	Pince à tige d'amortisseur	Pinze albero ammortizzatore	Alicates para vástagos amortiguador
TLR99102	Turnbuckle Wrench, 22, 8ight, XXX	TLR Stellschlüssel für Gewindestift, 3.5, 4, 5mm	22/8ight/XXX - Clé à biellettes	Chiave per tenditore, 22, 8ight, XXX	Llave tirantes: 22, 8ight, XXX